

MERCEDES HELNWEIN CHAOS THEORY

Edward Hopper House - May 26 – August 6, 2017

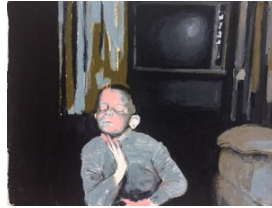
1. **Street, 2014**

Oil pastel on paper
49 x 75 in.



5. **Crash, 2015**

Oil pastel on paper
26 x 31 ¾ in.



2. **Bob's Friends, 2015**

Oil pastel on paper
22 ¼ x 25 ½ in.



6. **Red Cube, 2015**

Pencil and oil pastel on tracing paper
15 3/8 x 17 in.



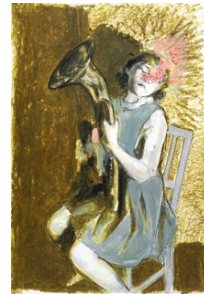
3. **Halloween III, 2016**

Oil pastel on paper
49 x 63 1/2 in.



7. **Today, 2015**

Oil pastel on paper
17 ¾ x 14 1/8 in.



4. **Connection, 2016**

Oil pastel on tracing paper
13 x 14 ¼ in.



8. **Parents, 2016**

Oil pastel on paper
27 ¾ x 26 ¼ in.



9. **Girl Sitting**, 2016

Ink and oil pastel on paper
13 ¼ x 12 1/8 in.



10. **Toastmasters**, 2015

Ink and oil pastel on paper
17 1/8 x 15 1/4 in.



11. **Gravity**, 2016

Oil pastel on paper
22 ¾ x 22 ¾ in.



12. **Laney**, 2016

Oil pastel on paper
40 x 40 in.



13. **Nurses**, 2013

Cops, 2013

Films by Mercedes Helnwein

Cinematography by Giovanni Ribisi

Music by Ali Helnwein

